

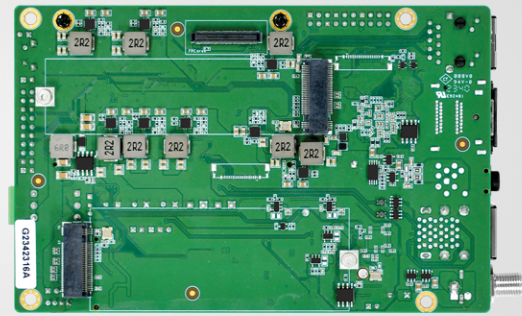
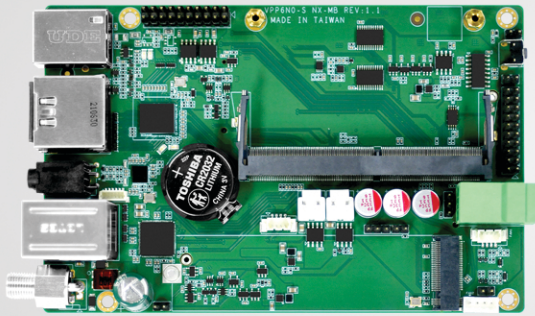


VPP6N0-S-MB NANO

Phone: (626) 610-1888

Email: info@acmeportable.com

Web: www.acmeportable.com



Entry Edge AI

CPU

NVIDIA Jetson Orin™ Nano
6-core Arm® Cortex®-A78AE v8.2 64-bit CPU
1.5MB L2 + 4MB L3

GRAPHICS CARD

Option 1: NVIDIA Jetson Orin™ Nano 4GB
512-core NVIDIA Ampere Architecture GPU
with 16 Tensor Cores

Option 2: NVIDIA Jetson Orin™ Nano 8GB
1024-core NVIDIA Ampere Architecture GPU
with 32 Tensor Cores

AI PERFORMANCE

Option 1: NVIDIA Jetson Orin™ Nano 4GB
20 TOPS

Option 2: NVIDIA Jetson Orin™ Nano 8GB
40 TOPS

MEMORY

Option 1: NVIDIA Jetson Orin™ Nano 4GB
4GB LPDDR5

Option 2: NVIDIA Jetson Orin™ Nano 8GB
8GB LPDDR5

STORAGE

Supports External NVMe

DISPLAY INTERFACE

2x HDMI2.0

EXPANSION SLOT

M.2
1xM.2 2280/3080 M Key PCIe Gen3x4 Slot
1xM.2 2280 M Key PCIe Gen3x2 Slot
1xM.2 2280 M Key PCIe Gen3x1 Slot

USB

4xUSB3.2 Gen2 (Type-A)
1xUSB3.2 Gen1 (Pin Header)
1xUSB3.2 Gen1 (Pin Header, Contains USB3.0 Signal Only)

ETHERNET

1xRJ45 for 10/100/1000Mbps Ethernet
DHCP Client

MIPI

8xMIPI CSI-2 Lanes
(D-PHY 2.1, 2x4 | 4x2 | 1x4+2x2 MIPI Lanes,
Support MIPI Camera, Capture Card)

AUDIO

1x Line In (3.5mm or Pin Header)
1x Line Out (3.5mm or Pin Header)

PERIPHERALS

1xRS232 (Phoenix Connector or Pin Header)
1xRS485 (Phoenix Connector or Pin Header)
4xGPIO (Pin Header)
3xI2C (Pin Header)