

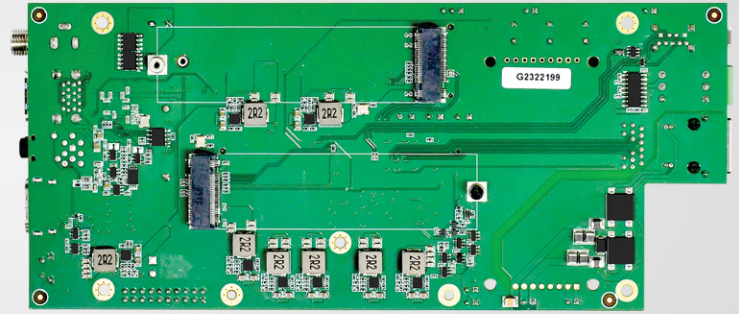
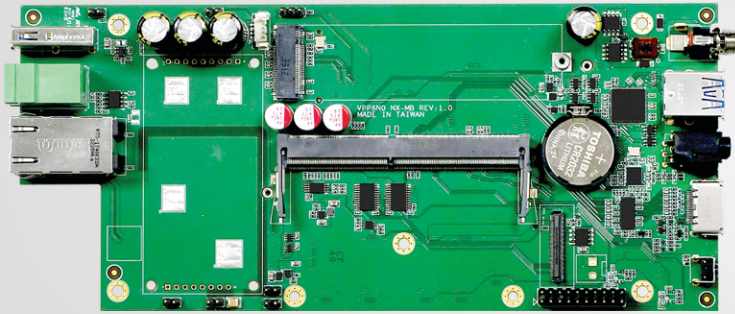


VPP6N0-MB NX

Phone: (626) 610-1888

Email: info@acmeportable.com

Web: www.acmeportable.com



POE Support Edge AI Platform

CPU

Option 1: NVIDIA Jetson Orin™ NX 8GB
6-Core Arm® Cortex®-A78AE v8.2 64-Bit CPU
1.5MB L2 + 4MB L3

Option 2: NVIDIA Jetson Orin™ NX 16GB
8-Core Arm® Cortex®-A78AE v8.2 64-Bit CPU
2MB L2 + 4MB L3

AI PERFORMANCE

Option 1: NVIDIA Jetson Orin™ NX 8GB
70 TOPS

Option 2: NVIDIA Jetson Orin™ NX 16GB
100 TOPS

STORAGE

Supports External NVMe

EXPANSION SLOT

M.2
1xM.2 2280 M Key PCIe Gen4x4 Slot
1xM.2 2280 M Key PCIe Gen4x2 Slot
1xM.2 2280 M Key PCIe Gen4x1 Slot

ETHERNET

1xRJ45 for 10/100/1000Mbps Ethernet
DHCP Client

AUDIO

1x 3.5mm Line In
1x 3.5mm Line Out

GRAPHICS CARD

1024-Core NVIDIA Ampere Architecture GPU
with 32 Tensor Cores

MEMORY

Option 1: NVIDIA Jetson Orin™ NX 8GB
8GB LPDDR5

Option 2: NVIDIA Jetson Orin™ NX 16GB
16GB LPDDR5

DISPLAY INTERFACE

1x HDMI2.0

USB

3xUSB3.2 Gen2 (Type-A)
2xUSB3.2 Gen1 (Pin Header)

MIPI

8xMIPI CSI-2 Lanes
(D-PHY 2.1, 2x4 | 4x2 | 1x4+2x2 MIPI Lanes,
Support MIPI Camera, Capture Card)

PERIPHERALS

1x RS232
1x RS485